

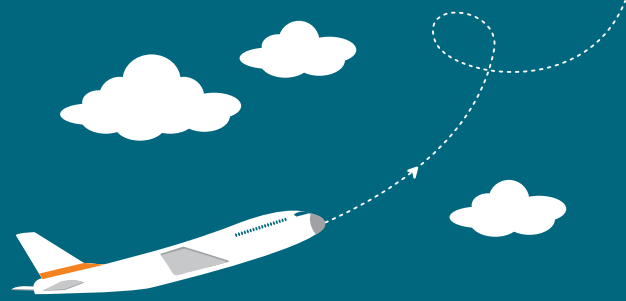
AVIATION BAROMETER

QUARTER 4 | OCTOBER 2016 – DECEMBER 2016



AIRPORTS COMPANY
SOUTH AFRICA

SOUTH AFRICA'S TOP AIRPORTS BREAK PASSENGER NUMBER RECORDS



Airports Company South Africa broke records and achieved a historic milestone in 2016 with its network of nine airports reaching and passing the 39 million passenger mark for the year. At the end of December 2016, 39.7 million passengers had been facilitated, a 5.4% increase from 2015.

The three main international gateways all achieved significant firsts with O.R. Tambo International Airport exceeding 20 million passengers, Cape Town International Airport processing 10 million passengers and King Shaka International Airport processing more than 5 million passengers for the year.

In terms of percentage growth, King Shaka International Airport recorded the highest overall growth for the year with an 8.45% increase, Cape Town International coming in second with a growth of 7.3% and in third place, O. R. Tambo International Airport with a 3.8% increase.

ANNUAL PASSENGER STATISTICS

Domestic:

Domestic Arrivals rose to 13.6 million passengers, an increase of 5.3% from the previous year. Domestic Departures also experienced an increase with 13.7 million passengers, a 5.3% increase from 2015.

International:

International Arrivals increased by 5.3% with 5.4 million passengers whilst International Departures rose by a notable 5.8% to 5.5 million passengers.

Regional (Namibia, Botswana, Lesotho & Swaziland):

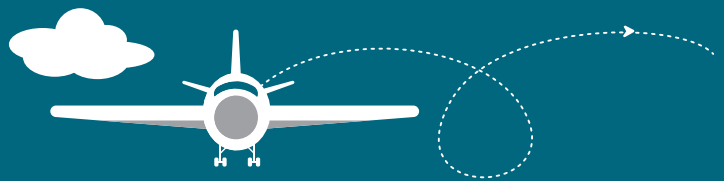
Travel to neighbouring countries remained healthy with Regional Arrivals going up by 6.0% to 567 254 passengers, whilst Regional Departures went up 6.4% with 565 702 passengers due to the festive season.

QUARTERLY PASSENGER STATISTICS

Domestic traffic growth in the fourth quarter of 2016 slowed down, with Arrivals only increasing by 1.4% and Departures only going up by a marginal 1.2% compared to the same period in 2015.

The strongest driver of passenger growth in the final quarter was International Departures, which saw a growth of 7.5% and International Arrivals with a recorded 7.1% increase. This was also due to the summer holidays, which is traditionally one of the busiest travel seasons in South Africa.

KEY INDICATORS Q4 2015 vs Q4 2016



INTERNATIONAL
ARRIVALS UP BY
7.1%



INTERNATIONAL
DEPARTURES UP BY
7.5%



REGIONAL
ARRIVALS UP BY
1.1%



REGIONAL
DEPARTURES UP BY
1.3%



DOMESTIC
ARRIVALS UP BY
1.4%



DOMESTIC
DEPARTURES UP BY
1.2%



TOTAL
ARRIVALS UP BY
2.8%



TOTAL
DEPARTURES UP BY
2.9%

INTERNATIONAL ARRIVALS & DEPARTURES

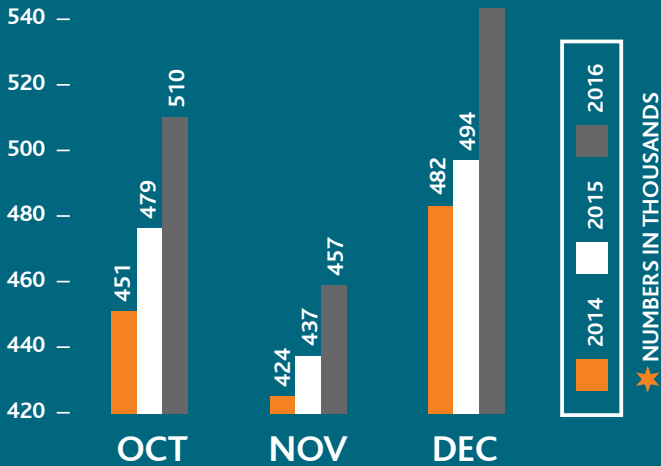


INTERNATIONAL ARRIVALS

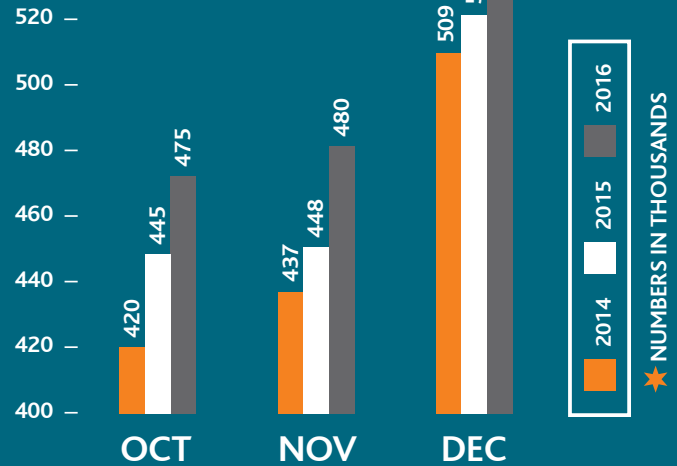


INTERNATIONAL DEPARTURES

INTERNATIONAL ARRIVALS PASSENGERS



INTERNATIONAL DEPARTURES PASSENGERS



REGIONAL ARRIVALS & DEPARTURES



REGIONAL ARRIVALS

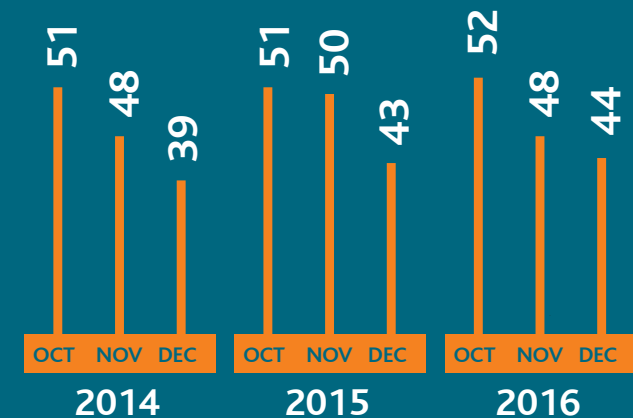


REGIONAL DEPARTURES

REGIONAL ARRIVALS PASSENGERS



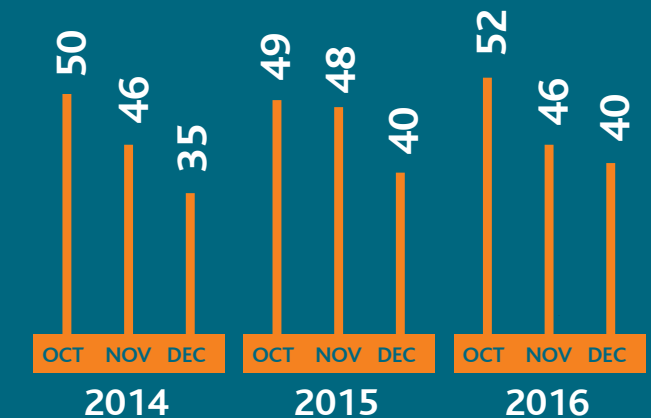
★ NUMBERS IN THOUSANDS



REGIONAL DEPARTURES PASSENGERS



★ NUMBERS IN THOUSANDS



DOMESTIC ARRIVALS & DEPARTURES

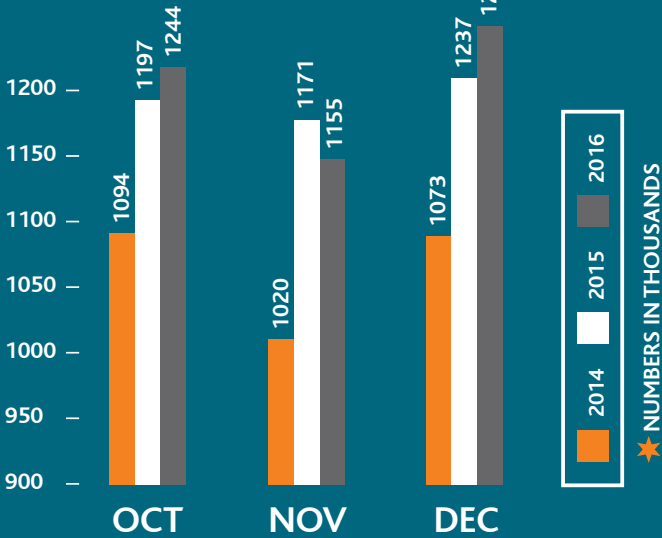


DOMESTIC ARRIVALS

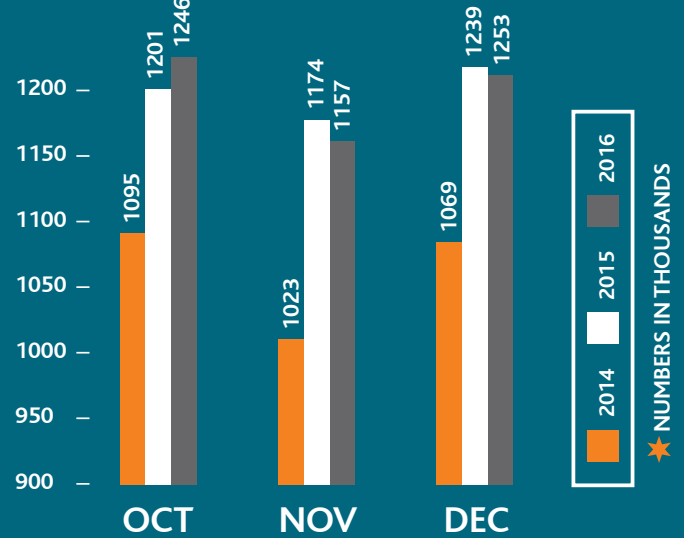


DOMESTIC DEPARTURES

DOMESTIC ARRIVALS PASSENGERS



DOMESTIC DEPARTURES PASSENGERS



TOTAL ARRIVALS & DEPARTURES



TOTAL ARRIVALS

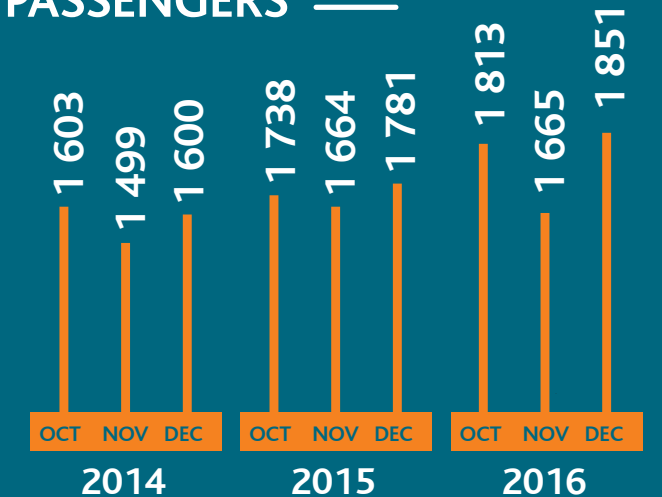


TOTAL DEPARTURES

TOTAL ARRIVALS PASSENGERS



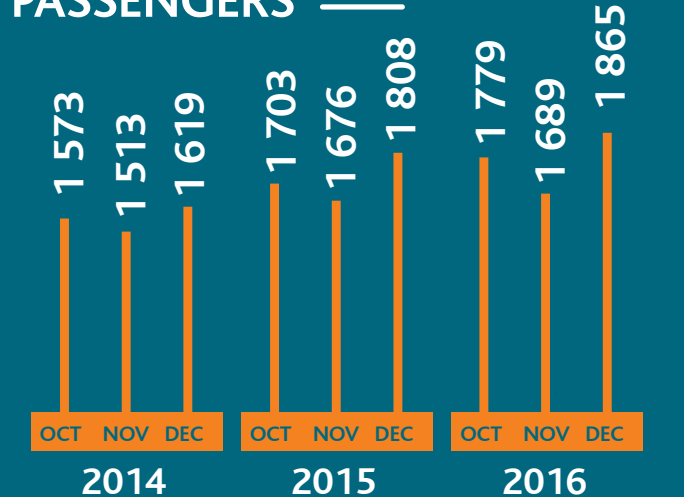
NUMBERS IN MILLIONS



TOTAL DEPARTURES PASSENGERS



NUMBERS IN MILLIONS



★ The total Arrivals and Departures figures include International, Regional and Domestic passenger numbers.



PREPARED BY AIRPORTS COMPANY SOUTH AFRICA
For further information, contact mediadesk@airports.co.za

